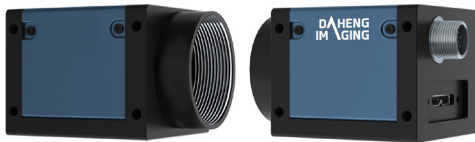


# MERCURY2 PRO SERIES

## ME2P-2621-15U3M/C



- Ultra small, light and robust
- 1.1" global shutter CMOS sensor
- Compatible with GenICam™ and USB3 Vision®
- USB3.0 interface
- 26.2 Megapixels
- High definition and low cost

The MERCURY2 PRO USB3.0 series (ME2P-U3) camera is DAHENG IMAGING's high definition industrial digital camera. ME2P-2621-15U3M/C supports Gamma, Reverse, Black Level, Defect Pixel Correction and more features to adapt to various vision applications, especially supporting Sharpness and Noise Reduction to improve the image quality. ME2P-2621-15U3M/C is a monochrome/color USB3 Vision camera with the GMAX0505 CMOS sensor. The ME2P-2621-15U3M/C camera has opto-isolated I/Os that adapt to specific needs. Four-side mounting holes provide maximum installation flexibility for ME2P-U3. Thanks to the extremely compact design (36mm × 31mm × 38.8mm), locking screw connectors, the MERCURY2 PRO series cameras can secure the reliability of cameras deployed in harsh environments. Featuring compact design, outstanding performance, ease of installation and use, the MERCURY2 PRO cameras are especially suitable for machine vision applications such as industrial inspection, medical, scientific research, education, security and so on.

### Features

- Programmable ROI, increased frame rate with partial scan
- Gain, exposure and white balance programmable (white balance only for color models)
- Support auto gain, auto exposure and auto white balance (auto white balance only for color models)
- Three acquisition controls: Continuous acquisition / Software trigger acquisition / External trigger acquisition
- Support LUTs and storable user sets
- Support Reverse, Black Level and Defect Pixel Correction
- Support Color Enhancement for improving image quality (only for color models)
- Adjustable Gamma for optimizing the brightness (only for color models)
- Add Sharpness and Noise Reduction to optimize the edge definition and improve the quality of images (only for mono models)
- Support Remove Parameter Limit to expand the range of exposure, gain, white balance, and so on
- 16KB data storage area for saving algorithm coefficients, parameter configuration, and so on
- Provide mounting holes on four surfaces for flexible installation
- Compatible with GenICam™ and USB3 Vision®, can be used in a wide range of 3rd-party software such as HALCON, MERLIC and LabVIEW directly
- Optimized software package for 32/64bit Windows, and support Linux, Android, ARMv7 and ARMv8
- Multiple samples and easy-to-integrate SDKs for various programming tools
- Regulations: CE, RoHS, GenICam, USB3 Vision

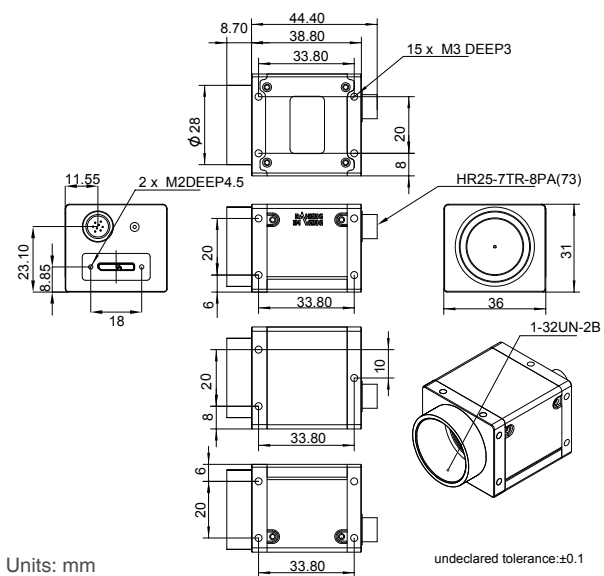
### Performance Specifications

|               |                                       |
|---------------|---------------------------------------|
| Model         | ME2P-2621-15U3M/C                     |
| Interface     | USB3.0                                |
| Resolution    | 5120(H) × 5120(V)                     |
| Frame rate    | 15.1 fps                              |
| Sensor        | 1.1", global shutter<br>GMAX0505 CMOS |
| Pixel size    | 2.5 μm × 2.5 μm                       |
| Spectrum      | Monochrome / Color                    |
| Exposure time | 10μs ~ 1s                             |

### Mechanical Specifications

|            |   |
|------------|---|
| Weight     | 66g                                     |
| Dimensions | 36x31x38.8 mm, w/o adapter & connectors |

### Technical Drawing



### Electrical Specifications

|                   |                             |
|-------------------|-----------------------------|
| Power requirement | 5 VDC via USB cable         |
| I/Os              | 1 input / 1 output, 2 GPIOs |
| Data interface    | Micro B                     |
| Power consumption | <2.5W @5V DC                |

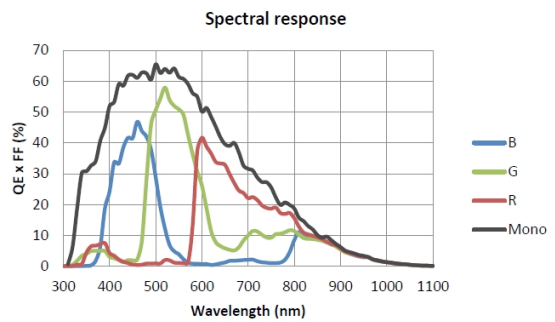
### Environmental Specifications

|                    |               |
|--------------------|---------------|
| Operating temp.    | 0°C ~ +45°C   |
| Storage temp.      | -20°C ~ +70°C |
| Operating humidity | 10% ~ 80%     |

### Optical Specifications

|            |         |
|------------|---------|
| Lens mount | C-Mount |
|------------|---------|

### Spectral Response



ME2P-2621-15U3M/C

China Daheng Group, Inc. Beijing Image Vision Technology Branch

12F Daheng Science & Technology Tower, No.3 Suzhou Street, Haidian District,

Beijing China, 100080

Tel: +86 10 82828878

E-mail: isales@daheng-imaging.com

For more information please visit : [www.daheng-imaging.com/en](http://www.daheng-imaging.com/en)

Specifications are subject to change without prior notice.

Copyright © 2020 China Daheng Group, Inc. Beijing Image Vision Technology Branch. All rights reserved.

April 07, 2020